



Friedrich Hundertwasser was an artist and architect from Austria. He was very interested in protecting the environment and LOVED trees!

Here is a model of one of his building designs. Look at all the trees!



The Houses are Hanging Underneath The Meadows, 1972

Hundertwasser painted pictures of places in towns and cities. This painting is a park near the Amazon River.

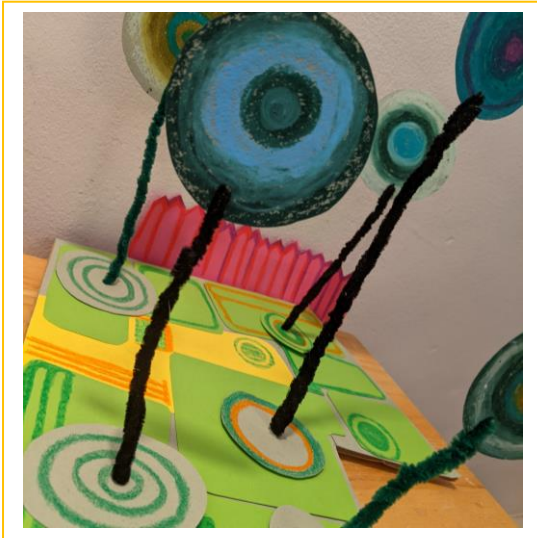


Jardin Public by Hundertwasser
Watercolour, 1977

Can you spot?

- Fences
- A path
- The entrance
- 9 trees
- A river

Hundertwasser's Park of Trees



What you will need:

- Paper or thin card
- Wax crayons or oil pastels
- Scissors
- Pipe cleaners
- Hole punch
- Pencil
- Glue stick
- Sticky tape
- A piece of cardboard (for the base)

Let's become architects and design a park! Using simple materials and a bit of Hundertwasser's style, we will make a 3D model – including some lollipop trees!

- 1.** Decorate a piece of cardboard with a patchwork of coloured paper. (We carefully looked at Hundertwasser's painting and added some circles, dots and lines with oil pastels to some of the patches to add detail). Stick the patches down with some glue.
- 2.** With a contrasting-coloured paper, make some fences to edge your cardboard base.
- 3.** Cut-out some paper circles for the tree-tops. These can be coloured-in with oil pastels to make some Hundertwasser patterns. Don't forget to colour-in both sides because this will be a 3D model!
- 4.** Use a hole-punch to make a hole along the circle's edge. Thread through a pipe-cleaner and twist to attach to the paper circle. This is your lollipop tree!
- 5.** Thinking carefully about where you would like the trees to be planted in your park design. Position a paper circle where you want your tree. Make a hole with a pencil through the paper circle and into the cardboard base for each tree. Thread your pipe cleaner through the two layers and with a little tape, stick the pipe-cleaner underneath the base.