

Adding '-ed' and '-ing' to Verbs ending in 'e'

Practise the words on this list using look, say, cover, write and check. Hint: when some verbs end in 'e' and you want to add '-ed' or '-ing', you must remove the 'e' first. Be careful though, not all verbs ending in 'e' follow this rule!



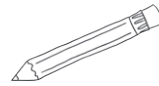
Look



Say



Cover



Write



Check

Word	1st try	2nd try	3rd try
wave			
waved			
waving			
save			
saved			
saving			
stroke			
stroked			
stroking			

Adding '-ed' and '-ing' to Verbs ending in 'e'

Challenge: Can you apply the rule to other words?

To make sure that you understand the rule, try adding '-ed' and '-ing' to these words too. Watch out for the tricky ones!

Verb	Add -ed	Add -ing
smile		
hope		
bake		
care		
drive		
ride		

Can you think of any other words to add to the list?
